



OLDER ADULT SERVICES

PRESENTED BY:

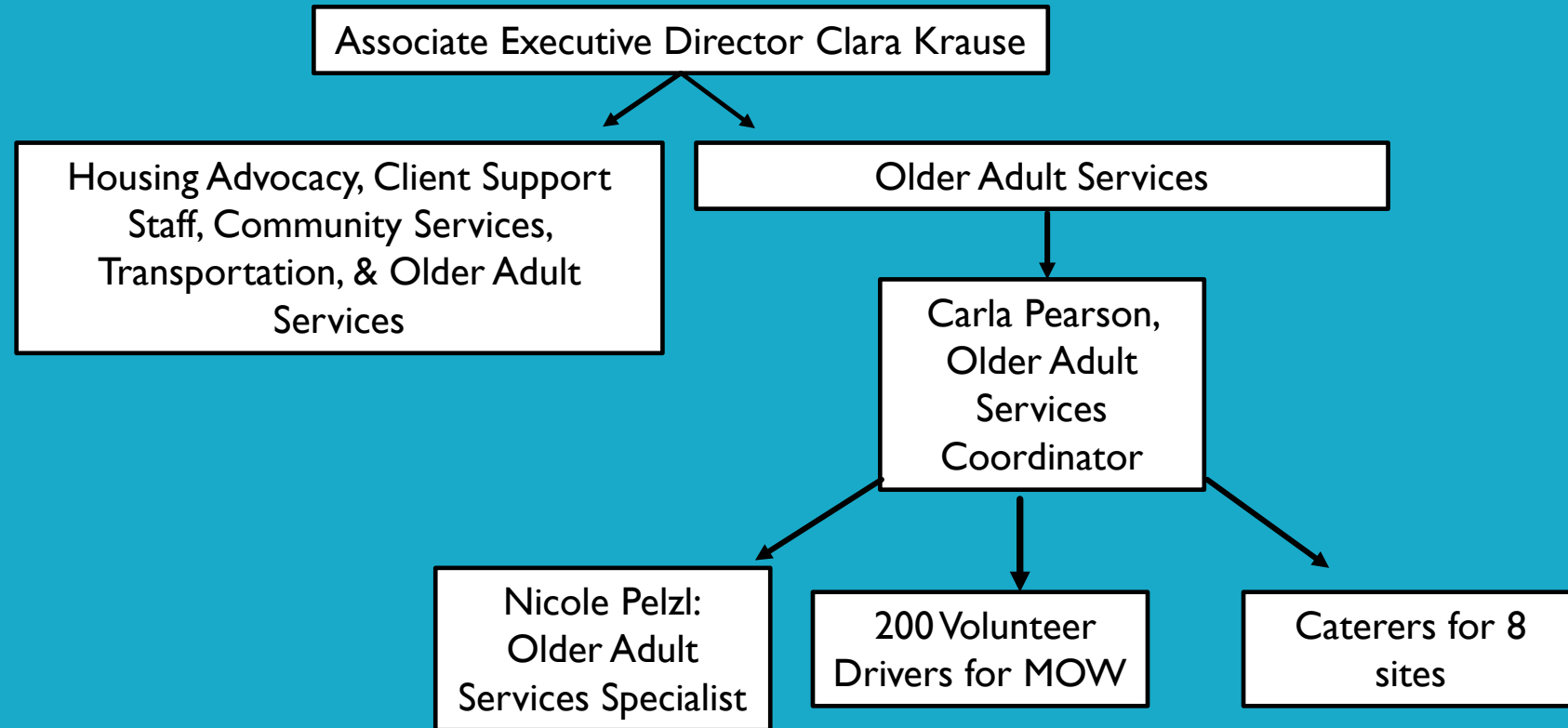
CARLA PEARSON

Older Adults Services Overview

Meals on Wheels provides hot, nutritionally balanced meals to homebound older adults who live in rural areas and are unable to prepare meals. Meals are offered in Cannon Falls, Goodhue, Faribault, Mazeppa, Pine Island, Wanamingo, Wabasha, & Zumbrota and delivered by community volunteers

Advocacy for Older Adults and Caregiver supports offers support, education, problem solving, community referrals to enhance healthful caregiving to keep older adults at home

DEPARTMENT ORGANIZATION



- Carla Pearson, LSW
 - Social Worker 28+ years; 13 with TRCA
 - Passionate about helping older adults stay at home
 - Supporting caregivers of OA's with dementias
 - Mental Health Awareness
- Nicole Pelzl, BA
 - Human Services 7 years; 5 with TRCA
 - Passionate about connection with communities and advocating for older adults and caregivers
 - Enjoys navigating older adults through resources and benefits for those without familial supports

OUR ADVOCATES

FUNDING



Older Adult Services receives most of its funding through the Older American's Act established in 1966. These funds are administered through MN Board on Aging and SEMAAA in Rochester

United Way of Goodhue, Wabasha, & Pierce has always been very supportive of our services by providing a large part of funds for MBA's required match.

Rice County United Way also supports our efforts and has recently awarded our program the largest amount ever!

We continue to explore and apply for additional funding through private foundations and businesses.

BY THE NUMBERS

- # Served in 2021
 - Meals on Wheels
 - 33,553 meals served
 - 242 Unduplicated Clients
 - Advocacy for Older Adults and Caregiver Supports
 - 325 Unduplicated Clients
 - 1,166 “Contacts”
- 72% over the age of 75
- 66% female
- 63% rural
- 100% isolated & homebound
- 70% live alone
- 72% living in poverty

WHO WE HELP

Corrine, 66 Adult child caregiver for rural mother

- Continuum of Care/Memory care
- Mental Health & support group referrals
- Family Dynamics
- Home care options
- Weekly supports for goal setting and task completion

Marlene, 80 Lives alone in owned house with AD

- Education Continuum of Care & Disease progression
- Home Care costs
- Homemaking services
- Pet care
- MOW
- Lifeline/Med Alert



MOVING FORWARD

- Lonsdale MOW!
- Live Well At Home funding plans for program expansion
 - Caregiver Respite
 - Pair with congregate dining, community center activities
 - Volunteer based
 - Pilot project then expand
 - Volunteer Coordinator position
 - MOW
 - HART
 - Respite
- MOW/Caregiver RFP's out this summer

Upcoming funding opportunities;
Ameritrade- applied-decision/September
Medica Foundation- July
Rochester Area Foundation-July
Rice Co. UW- funding decision pending





QUESTIONS?